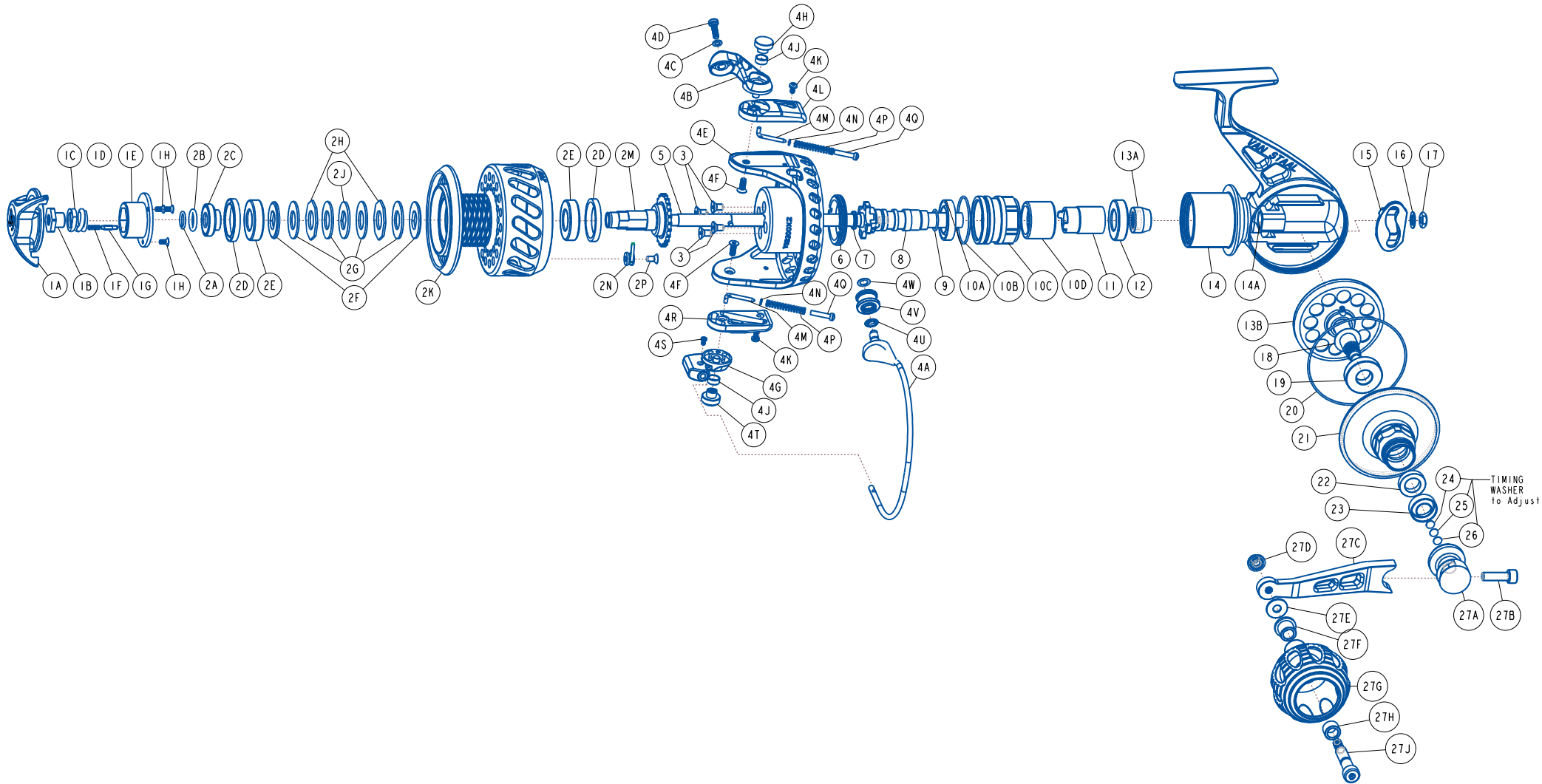


VAN STAAL

**VAN STAAL
VSB150BX2
COMPONENT DIAGRAM**



Van Staal VSB150BX2 Part List

Key No.	Description	Part No.	Q'TY	Key No.	Description	Part No.	Q'TY
		VSB150BX2				VSB150BX2	
1	Drag Knob Assembly (Kit)	VS41006-02	1	4V	Line Roller Assembly	SR3120-1	1
1A	Drag Knob	VS1006-11	1	4W	Line Roller Adj Washer - 0.1	PAB035-03	1
1B	Drag Nut	VS1027-01	1		Line Roller Adj Washer - 0.3	PAB035-04	1
1C	Drag Spring	VS1054-01	1	5	Spool Shaft Assembly	VSD315-01	1
1D	Drag Knob Washer	VS035-01	1	6	Lock Ring	VSD122-01	1
1E	Drag Knob Cap	VS1026-01	1	7	Quad Seal	ORQ3	1
1F	Drag Click Spring	VS049-01	1	8	Spool Shaft Guide	VSD075-01	1
1G	Drag Click Pawl	VS149-01	1	9	Spool Shaft Guide O-Ring	VS164-01	1
1H	Drag Knob Cap Screw	SCFH15	3	10	Clutch Housing Assembly	VSD4038-01	1
2	Spool Assembly (Kit)	VSD321-01	1	10A	Clutch Housing Cup Seal	OSPR6	1
2A	Retainer Ring	SR1041	1	10B	Clutch Housing O-Ring	ORR8	1
2B	Spool Retainer O-Ring	ORR10	1	10C	Clutch Housing	VSD038-01	1
2C	Spool Retainer	VSB1024-B	1	10D	One Way Clutch	VSB1090	1
2D	Cup Seal	OSPR6	2	11	One Way Clutch Sleeve	VSD139-01	1
2E	Ball Bearing	CP058-03	2	12	Ball Bearing	DP058-02	1
2F	Drag "D" Washer - Chamfered	SR1036	2	13	Gear Kit	VSD4312-01	1
2G	Drag Disc	SR1038-1	4	13A	Pinion Gear	(SR1011)	1
2H	Drag Key Washer - Octagon	SR1039	3	13B	Main Gear Assembly	(VSD312-01)	1
2J	Drag "D" Washer	SR1037	1	14	Body Assembly	VSD301-01	1
2K	Spool	VSD021-01	1	14A	Body Bushing	SR1016-01	1
2L	Compensation Washer	SR1076	1	15	Travers Guide (O/S Slider)	VS1017-01	1
2M	Spool Hub	VSB1040	1	16	Internal Teeth Lock Washer	WSLCIT1	1
2N	Clicker Sub Assembly	SR1058-1	1	17	Spool Shaft Hex Nut	NTHX1	1
2P	Flat Socket Head Screw	SCFH2	1	18	Shim Washer - 0.002	SR1075-01	1
3	Rotor Screw	SCFH6	4		Shim Washer - 0.005	SR1075-02	1
4	Rotor Assembly (Kit)	VSE4009-01	1		Shim Washer - 0.010	SR1075-03	1
4A	Bail Assembly	VSE347-01	1	19	Drive Gear Ball Bearing	BGRS12-B	1
4B	Bail Arm Lever	VSE007-01	1	20	Body Cover O-Ring	ORR9	1
4C	Line Roller Screw Washer	VP067-01	1	21	Body Cover	VSD023-01	1
4D	Line Roller Screw	LF123-01	1	22	Body Cover Ball Bearing	BGRS90	1
4E	Rotor	VSE009-01	1	23	Body Cup Seal	OSPR5	1
4F	Arm Lever Cap Screw	VR057-01	2	24	Timing Washer 0.5	DA082-02	1
4G	Bail Holder	VSE017-01	1	25	Timing Washer 0.3	DA082-03	1
4H	Arm Lever Cap	VSE113-01	1	26	Timing Washer 0.1	DA082-04	1
4J	Arm Lever Bushing	VR158-01	2	27	Handle Assembly (Kit)	VSD318-01	1
4K	Arm Lever Cover Screw	VSE057-01	2	27A	Handle Hub (Stand)	SR1014B	1
4L	Arm Lever Cover	VSE046-01	1	27B	Handle Screw	SCSHC8	1
4M	Bail Spring Link	VS095-01	2	27C	Handle Arm	VSD018-01	1
4N	Bail Spring Spacer	VR048-01	2	27D	Handle Knob Bolt Nut	SR1060P	1
4P	Bail Spring	VR022-01	2	27E	Handle Washer	SR1078	1
4Q	Bail Spring Pivot	VR095-01	2	27F	Handle Knob Bushing - Flanged	SR1030	1
4R	Bail Holder Cover	VSE087-01	1	27G	Power Grip Handle Knob	SR1208-01	1
4S	Bail Holder Screw	VSE051-01	1	27H	Handle Knob Bushing - Plain	SR1029	1
4T	Bail Holder Cap	VS113-01	1	27J	Handle Knob Spindle	VSB1020-02	1
4U	Line Roller Seal	VSD109-01	1				